



Replacement Seals for Food, Dairy & Beverage Processing



DEMAND QUALITY...

DEMAND U.S. SEAL MFG.



Supplying a Complete Line of Quality Seals

For Over 50 Years



Replacement Seals for Food, Dairy & Beverage Processing

Introducing U.S. Seal Mfg.'s Value Guard Food Service line of replacement mechanical seals and components.

Used on centrifugal and positive displacement pumps, and related equipment throughout the Food, Dairy and Beverage Industries, these quality items can be used with confidence.

Our VGFS line meets all applicable sanitary and quality standards. Seal elastomer components are manufactured to 3A standards. All seal faces are GRAS.

When installing these seals, U.S. Seal Mfg. recommends using our U.S. SEALUBE, which is NSF-Registered as a H1 lubricant and also meets FDA Regulation 21 CFR 178.3570.

For equipment manufacturers, part numbers or materials not listed, please contact our office.

CONTENTS

APV® Centrifugal Pump Replacement Seals1
 Alfa Laval® Centrifugal Pump Replacement Seals2
 Alfa Laval® (G&H) PD Pump Replacement Seals3-4
 Fristam Pumps® Centrifugal Pump Replacement Seals5-6
 Tri-Clover® Centrifugal Pump Replacement Seals7-8
 Waukesha® Cherry-Burrell® Replacement Seals9-20

VALUE GUARD MATERIAL CODE

O-RING MATERIAL	ROTARY FACE	METAL PARTS	STATIONARY FACE	SPRING
B. Buna	C. Carbon	F. Stainless Steel	C. Carbon	F. Stainless Steel
I. Silicone	J. Ceramic		J. Ceramic	
Q. EPR	L. Silicon Carbide		L. Silicon Carbide	
V. Viton®	W. Chrome Oxide Coated SS		Z. Tungsten Carbide	

Viton® is a registered trademark of DuPont Performance Elastomers, LLC

APV® Centrifugal Pump Replacement Seals

W 20/20, 25/75, 30/25, 30/50, 40/20, 50/25

Mfg. Part No.	Value Guard Part No.	Seal Type	Shaft Dia.	Material Code
179644	VGFS-1000	Single	25 MM	QCFLF
179645	VGFS-1001	Single	25 MM	QLFLF
179647	VGFS-1002	Single	25 MM	VCFLF
179648	VGFS-1003	Single	25 MM	VLFLF
771661	VGFS-1004	Single	25 MM	BCFLF
771662	VGFS-1005	Single	25 MM	BLFLF

Non-Flushed

Mfg. Part No.	Value Guard Part No.	Seal Type	Shaft Dia.	Material Code
179656	VGFS-1006	Double	25 MM	QCFLF
179657	VGFS-1007	Double	25 MM	QC/LFLF
179659	VGFS-1008	Double	25 MM	VCFLF
771660	VGFS-1009	Double	25 MM	VC/LFLF
771679	VGFS-1010	Double	25 MM	BCFLF
771680	VGFS-1011	Double	25 MM	BC/LFLF

Flushed

W 30/100, 50/50, 50/100, 60/300, 70/30, 80/50, 100/130

Mfg. Part No.	Value Guard Part No.	Seal Type	Shaft Dia.	Material Code
179650	VGFS-1020	Single	35 MM	QCFLF
179651	VGFS-1021	Single	35 MM	QLFLF
771653	VGFS-1022	Single	35 MM	VCFLF
771654	VGFS-1023	Single	35 MM	VLFLF
771670	VGFS-1024	Single	35 MM	BCFLF
771671	VGFS-1025	Single	35 MM	BLFLF

Non-Flushed

Mfg. Part No.	Value Guard Part No.	Seal Type	Shaft Dia.	Material Code
179662	VGFS-1026	Double	35 MM	QCFLF
179663	VGFS-1027	Double	35 MM	QC/LFLF
179665	VGFS-1028	Double	35 MM	VCFLF
179666	VGFS-1029	Double	35 MM	VC/LFLF

Flushed



VGFS-1000



VGFS-1006
With Common Seat



VGFS-1042

W+ 10/8, 22/20, 30/80, 35/35, 35/55, 50/8, 55/35

Mfg. Part No.	Value Guard Part No.	Seal Type	Shaft Dia.	Material Code
772461	VGFS-1030	Single	25 MM	QC-L-
772462	VGFS-1031	Single	25 MM	VC-L-

Non-Flushed

Mfg. Part No.	Value Guard Part No.	Seal Type	Shaft Dia.	Material Code
772463	VGFS-1032	Single	25 MM	QL-L-
772464	VGFS-1033	Single	25 MM	VL-L-

W+ 25/210, 30/120, 30/180, 55/60, 60/110, 65/350, 70/40, 80/80, 110/130

Mfg. Part No.	Value Guard Part No.	Seal Type	Shaft Dia.	Material Code
772466	VGFS-1040	Single	35 MM	QC-L-
772467	VGFS-1041	Single	35 MM	VC-L-

Non-Flushed

Mfg. Part No.	Value Guard Part No.	Seal Type	Shaft Dia.	Material Code
772468	VGFS-1042	Single	35 MM	QL-L-
772469	VGFS-1043	Single	35 MM	VL-L-

Alfa Laval® Centrifugal Pump Replacement Seals

Tri-Flo® (Tri-Clover®) CL Series

Mfg. Part No.	Value Guard Part No.	Seal Type	Shaft Dia.	Material Code
9612-7118-01	VGFS-2000	Single	1.250	QCFLF
9612-7118-02	VGFS-2001	Single	1.250	BCFLF
9612-7118-03	VGFS-2002	Single	1.250	VCFLF
9612-7119-01	VGFS-2003	Single	1.250	QLFLF
9612-7119-02	VGFS-2004	Single	1.250	BLFLF
9612-7119-03	VGFS-2005	Single	1.250	VLFLF



VGFS-2000

LKH 5-60

Mfg. Part No.	Value Guard Part No.	Seal Type	Shaft Dia.	Material Code
9612-1296-05	VGFS-2010	Single	35 MM	QLFLF
9612-1296-06	VGFS-2011	Single	35 MM	BLFLF
9612-1296-07	VGFS-2012	Single	35 MM	VLFLF
9612-1296-09	VGFS-2013	Single	35 MM	QCFLF
9612-1296-10	VGFS-2014	Single	35 MM	BCFLF
9612-1296-11	VGFS-2015	Single	35 MM	VCFLF

Mfg. Part No.	Value Guard Part No.	Seal Type	Shaft Dia.	Material Code
9612-1296-13	VGFS-2016	Double	35 MM	QCFLF
9612-1296-14	VGFS-2017	Double	35 MM	BCFLF
9612-1296-15	VGFS-2018	Double	35 MM	VCFLF
9612-1296-17	VGFS-2019	Double	35 MM	QLFLF
9612-1296-18	VGFS-2020	Double	35 MM	BLFLF
9612-1296-19	VGFS-2021	Double	35 MM	VLFLF

LKH 70 & 80

Mfg. Part No.	Value Guard Part No.	Seal Type	Shaft Dia.	Material Code
9612-5151-01	VGFS-2030	Single	42 MM	QLFCF
9612-5151-02	VGFS-2031	Single	42 MM	BLFCF
9612-5151-03	VGFS-2032	Single	42 MM	VLFCF

Mfg. Part No.	Value Guard Part No.	Seal Type	Shaft Dia.	Material Code
9612-5151-05	VGFS-2033	Single	42 MM	QLFLF
9612-5151-06	VGFS-2034	Single	42 MM	BLFLF
9612-5151-07	VGFS-2035	Single	42 MM	VLFLF

LKH 110 & 120 Multi-Stage

Mfg. Part No.	Value Guard Part No.	Seal Type	Shaft Dia.	Material Code
9612-3622-01	VGFS-2040	Single	42 MM	QLFCF
9612-3622-02	VGFS-2041	Single	42 MM	BLFCF
9612-3622-03	VGFS-2042	Single	42 MM	VLFCF

Mfg. Part No.	Value Guard Part No.	Seal Type	Shaft Dia.	Material Code
9612-3622-04	VGFS-2043	Single	42 MM	QLFLF
9612-3622-05	VGFS-2044	Single	42 MM	BLFLF
9612-3622-06	VGFS-2045	Single	42 MM	VLFLF

Non-Flushed

Alfa Laval® (G&H) PD Pump Replacement Seals

TSE/SRU 1 (322 & 332) Hyclean Non-Flushed

Mfg. Part No.	Value Guard Part No.	Seal Type	Shaft Dia.	Material Code
9630053608	VGFS-3000	Single	20 MM	QCFFF
9630053609	VGFS-3001	Single	20 MM	QLFLF
9630057357	VGFS-3002	Single	20 MM	VCFLF
9630060999	VGFS-3003	Single	20 MM	VCFFF
9630065312	VGFS-3004	Single	20 MM	VLFLF

Mfg. Part No.	Value Guard Part No.	Seal Type	Shaft Dia.	Material Code
9630070142	VGFS-3005	Single	20 MM	BCFFF
9630090685	VGFS-3006	Single	20 MM	BLFLF
9630090686	VGFS-3007	Single	20 MM	QCFLF
9630090687	VGFS-3008	Single	20 MM	BCFLF

TSE/SRU 2 (422 & 432) Hyclean Non-Flushed

Mfg. Part No.	Value Guard Part No.	Seal Type	Shaft Dia.	Material Code
9630046729	VGFS-3010	Single	30 MM	BCFFF
9630046730	VGFS-3011	Single	30 MM	VCFFF
9630046731	VGFS-3012	Single	30 MM	QCFFF
9630046745	VGFS-3013	Single	30 MM	BCFLF
9630046746	VGFS-3014	Single	30 MM	VCFLF

Mfg. Part No.	Value Guard Part No.	Seal Type	Shaft Dia.	Material Code
9630046747	VGFS-3015	Single	30 MM	QCFLF
9630046758	VGFS-3016	Single	30 MM	BLFLF
9630046759	VGFS-3017	Single	30 MM	VLFLF
9630046760	VGFS-3018	Single	30 MM	QLFLF

TSE/SRU 3 (522 & 532) Hyclean Non-Flushed

Mfg. Part No.	Value Guard Part No.	Seal Type	Shaft Dia.	Material Code
9630046733	VGFS-3020	Single	35 MM	BCFFF
9630046734	VGFS-3021	Single	35 MM	VCFFF
9630046735	VGFS-3022	Single	35 MM	QCFFF
9630046749	VGFS-3023	Single	35 MM	BCFLF
9630046750	VGFS-3024	Single	35 MM	VCFLF

Mfg. Part No.	Value Guard Part No.	Seal Type	Shaft Dia.	Material Code
9630046751	VGFS-3025	Single	35 MM	QCFLF
9630046761	VGFS-3026	Single	35 MM	BLFLF
9630046762	VGFS-3027	Single	35 MM	VLFLF
9630046763	VGFS-3028	Single	35 MM	QLFLF

TSE/SRU 4 (622 & 632) Hyclean Non-Flushed

Mfg. Part No.	Value Guard Part No.	Seal Type	Shaft Dia.	Material Code
9630046737	VGFS-3030	Single	45 MM	BCFFF
9630046740	VGFS-3031	Single	45 MM	VCFFF
9630046741	VGFS-3032	Single	45 MM	QCFFF
9630046752	VGFS-3033	Single	45 MM	BCFLF
9630046753	VGFS-3034	Single	45 MM	VCFLF

Mfg. Part No.	Value Guard Part No.	Seal Type	Shaft Dia.	Material Code
9630046754	VGFS-3035	Single	45 MM	QCFLF
9630046765	VGFS-3036	Single	45 MM	BLFLF
9630046766	VGFS-3037	Single	45 MM	VLFLF
9630046767	VGFS-3038	Single	45 MM	QLFLF

Alfa Laval® (G&H) PD Pump Replacement Seals

TSE/SRU 5 (722 & 732) Hyclean Non-Flushed

Mfg. Part No.	Value Guard Part No.	Seal Type	Shaft Dia.	Material Code
9630046738	VGFS-3040	Single	55 MM	BCFFF
9630046743	VGFS-3041	Single	55 MM	VCFFF
9630046744	VGFS-3042	Single	55 MM	QCFFF
9630046755	VGFS-3043	Single	55 MM	BCFLF
9630046756	VGFS-3044	Single	55 MM	VCFLF

Mfg. Part No.	Value Guard Part No.	Seal Type	Shaft Dia.	Material Code
9630046757	VGFS-3045	Single	55 MM	QCFLF
9630046769	VGFS-3046	Single	55 MM	BLFLF
9630046770	VGFS-3047	Single	55 MM	VLFLF
9630046771	VGFS-3048	Single	55 MM	QLFLF

TSE/SRU 6 (822 & 832) Hyclean Non-Flushed

Mfg. Part No.	Value Guard Part No.	Seal Type	Shaft Dia.	Material Code
9630030780	VGFS-3050	Single	67 MM	VCFFF
9630041719	VGFS-3051	Single	67 MM	QCFFF
9630041720	VGFS-3052	Single	67 MM	QLFLF
9630041729	VGFS-3053	Single	67 MM	QCFLF
9630049360	VGFS-3054	Single	67 MM	VLFLF

Mfg. Part No.	Value Guard Part No.	Seal Type	Shaft Dia.	Material Code
9630053215	VGFS-3055	Single	67 MM	BCFFF
9630057267	VGFS-3056	Single	67 MM	VCFLF
9630060539	VGFS-3057	Single	67 MM	BLFLF
9630090689	VGFS-3058	Single	67 MM	BCFLF



Fristam Pumps® Centrifugal Pump Replacement Seals

FP, FPX Size 633

Mfg. Part No.	Value Guard Part No.	Seal Type	Shaft Dia.	Material Code
1802600002	VGFS-4000	Single	22 MM	VWFCF
1802600004	VGFS-4001	Single	22 MM	VLFCF

Mfg. Part No.	Value Guard Part No.	Seal Type	Shaft Dia.	Material Code
1802600000	VGFS-4002	Double	22 MM	VW/JFCF
1802600003	VGFS-4003	Double	22 MM	VL/JFCF
1802600295	VGFS-4004	Double	22 MM	VLFCF

- Split - 2 Piece Seat

Mfg. Part No.	Value Guard Part No.	Seal Type	Shaft Dia.	Material Code
1802600005	VGFS-4005	Single	22 MM	VLFLF
1802600135	VGFS-4006	Single	22 MM	VWFLF

Mfg. Part No.	Value Guard Part No.	Seal Type	Shaft Dia.	Material Code
1802600006	VGFS-4007	Double	22 MM	VL/JFL/CF
1802600140	VGFS-4008	Double	22 MM	VW/JFL/CF



VGFS-4000

FP, FPX Size 735

Mfg. Part No.	Value Guard Part No.	Seal Type	Shaft Dia.	Material Code
1802600127	VGFS-4010	Single	30 MM	VWFCF
1802600296	VGFS-4011	Single	30 MM	VLFCF

Mfg. Part No.	Value Guard Part No.	Seal Type	Shaft Dia.	Material Code
1802600128	VGFS-4012	Double	30 MM	VW/JFCF
1802600288	VGFS-4013	Double	30 MM	VL/JFCF
1802600312	VGFS-4014	Double	30 MM	VLFCF

- Tapered Seat ID -

Mfg. Part No.	Value Guard Part No.	Seal Type	Shaft Dia.	Material Code
1802600310	VGFS-4015	Single	30 MM	VWFCF

- Split - 2 Piece Seat

Mfg. Part No.	Value Guard Part No.	Seal Type	Shaft Dia.	Material Code
1802600129	VGFS-4016	Single	30 MM	VLFLF
1802600143	VGFS-4017	Single	30 MM	VWFLF

Mfg. Part No.	Value Guard Part No.	Seal Type	Shaft Dia.	Material Code
1802600130	VGFS-4018	Double	30 MM	VL/JFL/CF
1802600142	VGFS-4019	Double	30 MM	VW/JFL/CF

Fristam Pumps® Centrifugal Pump Replacement Seals

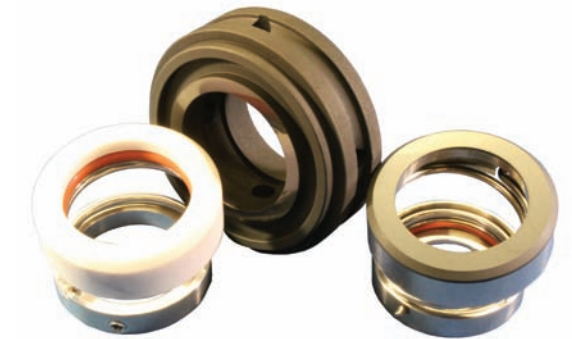
FP, FPX Size 736

Mfg. Part No.	Value Guard Part No.	Seal Type	Shaft Dia.	Material Code
1802600009	VGFS-4020	Single	35 MM	VWFCF
1802600337	VGFS-4021	Single	35 MM	VLFCF

Mfg. Part No.	Value Guard Part No.	Seal Type	Shaft Dia.	Material Code
1802600131	VGFS-4022	Double	35 MM	VW/JFCF
1802600301	VGFS-4023	Double	35 MM	VLFCF
1802600328	VGFS-4024	Double	35 MM	VL/JFCF

- Split - 2 Piece Seat

Mfg. Part No.	Value Guard Part No.	Seal Type	Shaft Dia.	Material Code
1802600132	VGFS-4025	Single	35 MM	VLFLF
1802600141	VGFS-4026	Single	35 MM	VWFLF
1802600139	VGFS-4027	Double	35 MM	VL/JFL/CF
1802600393	VGFS-4028	Double	35 MM	VW/JFL/CF



VGFS-4022

FPR

Mfg. Part No.	Value Guard Part No.	Seal Type	Shaft Dia.	Material Code
1802600639	VGFS-4030	Single	30 MM	VLFLF
1802600651	VGFS-4031	Single	30 MM	VWFCF
1802600678	VGFS-4032	Single	30 MM	VWFLF

Mfg. Part No.	Value Guard Part No.	Seal Type	Shaft Dia.	Material Code
1802600775	VGFS-4033	Double	30 MM	VW/JFCF
1802600845	VGFS-4034	Double	30 MM	QL/JFCF

FT

Mfg. Part No.	Value Guard Part No.	Seal Type	Shaft Dia.	Material Code
1802600027	VGFS-4040	Single	30 MM	VWFCF
1802600306	VGFS-4041	Single	30 MM	VLFLF

Mfg. Part No.	Value Guard Part No.	Seal Type	Shaft Dia.	Material Code
1802600340	VGFS-4042	Single	30 MM	VWFLF

FZX 2000 Mixer Pump

Mfg. Part No.	Value Guard Part No.	Seal Type	Shaft Dia.	Material Code
1802600010	VGFS-4050	Single	30 MM	VWFCF
1802600012	VGFS-4051	Single	30 MM	VLFLF

Mfg. Part No.	Value Guard Part No.	Seal Type	Shaft Dia.	Material Code
1802600014	VGFS-4052	Single	30 MM	VLFCF
1802600016	VGFS-4053	Single	30 MM	VWFLF

Tri-Clover® Centrifugal Pump Replacement Seals

3EH			
Mfg. Part No.	Value Guard Part No.	1.500 Shaft Dia. Component	Material Code
216D-80-3P	VGFS-5000	Cup	SS (F)
3EH-141D-26	VGFS-5001	Rotary Face	Carbon (C)
3EH-141D-27	VGFS-5002	Spring	SS (F)
S328-80-2-E	VGFS-5003	O-Ring, Seal	EPR (Q)
—	VGFS-5004	Gasket, Outer Seat	**
—	VGFS-5005	O-Ring, Inner Seat	EPR (Q)
—	VGFS-5006	Seat, Inner	Ceramic (J)
—	VGFS-5007	Seat, Outer	Ceramic (J)

** Compressed Non-Asbestos



VGFS-5030
Kit-1

4EH			
Mfg. Part No.	Value Guard Part No.	1.750 Shaft Dia. Component	Material Code
10CPLO-1-73-2-U	VGFS-5010	O-Ring, Rotary	EPR (Q)
4EH-143-23P-S	VGFS-5011	Cup	SS (F)
4EH-143A-26	VGFS-5012	Rotary Face	Carbon (C)
4EH-143A-27A	VGFS-5013	Spring, Single Seal	SS (F)
4EH-148A-23-S	VGFS-5014	Collar, Seal	SS (F)
4EH-148A-27A	VGFS-5015	Spring, Double Seal	SS (F)
—	VGFS-5016	Gasket, Outer Seat	**
—	VGFS-5017	O-Ring, Inner Seat	EPR (Q)
—	VGFS-5018	Seat, Inner	Ceramic (J)
—	VGFS-5019	Seat, Outer	Ceramic (J)



VGFS-5036
Kit-3

C114 / SP114

Mfg. Part No.	Value Guard Part No.	Component	Material Code
114D-11-316	VGFS-5020	Back Plate	SS (F)
114D-80-3P	VGFS-5021	Cup	SS (F)
114D-80-4	VGFS-5022	Spring	SS (F)
114E-80-1A	VGFS-5023	Rotary Face	Carbon (C)
60C-3-34A-E	VGFS-5024	O-Ring, Rotary	EPR (Q)

Mfg. Part No.	Value Guard Part No.	Component	Material Code
60C-3-34A-SFY	VGFS-5025	O-Ring, Rotary	Viton® (V)
60C-3-34A-U	VGFS-5026	O-Ring, Rotary	Buna (B)
S114-90A-U	VGFS-5027	Gasket, Casing	Buna (B)
SC905A-SS	VGFS-5028	Set Screw	SS (F)
SP114D-23P-316L	VGFS-5029	Collar, Drive	SS (F)

Pump Service Kits

Mfg. Part No.	Value Guard Part No.	Kit Type	Shaft Dia.	Material Code
C114-1	VGFS-5030	Kit-1	.750	BCF-F
C114-1E	VGFS-5031	Kit-1	.750	QCF-F
C114-1V	VGFS-5032	Kit-1	.750	VCF-F
C114-3	VGFS-5033	Kit-2	.750	BCF-F
C114-3E	VGFS-5034	Kit-2	.750	QCF-F

Mfg. Part No.	Value Guard Part No.	Kit Type	Shaft Dia.	Material Code
C114-3V	VGFS-5035	Kit-2	.750	VCF-F
9613990013	VGFS-5036	Kit-3	.750	BCF-F
9613990014	VGFS-5037	Kit-3	.750	QCF-F
9613990015	VGFS-5038	Kit-3	.750	VCF-F

Pump Service Kit-1 includes rotary face, rotary o-ring, case gasket and impeller pin.
 Pump Service Kit-2 includes rotary face, rotary o-ring, spring and cup.
 Pump Service Kit-3 includes rotary face, rotary o-ring, spring, cup, case gasket and set screws.

Tri-Clover® Centrifugal Pump Replacement Seals

C216 / SP216			
Mfg. Part No.	Value Guard Part No.	Component	Material Code
01-1165-19-E	VGFS-5040	O-Ring, Rotary	EPR (Q)
01-1165-19-SFY	VGFS-5041	O-Ring, Rotary	Viton® (V)
01-1165-19-U	VGFS-5042	O-Ring, Rotary	Buna (B)
216D-11-316	VGFS-5043	Back Plate	SS (F)
216D-80-3P	VGFS-5044	Cup	SS (F)

Mfg. Part No.	Value Guard Part No.	Component	Material Code
216D-80-4	VGFS-5045	Spring	SS (F)
216E-80-1A	VGFS-5046	Rotary Face	Carbon (C)
S216-90A-U	VGFS-5047	Casing Gasket	Buna (B)
SC1105A-SS	VGFS-5048	Set Screw	SS (F)
SP216D-23P-S	VGFS-5049	Drive Collar	SS (F)

Pump Service Kits

Mfg. Part No.	Value Guard Part No.	Seal Type	Shaft Dia.	Material Code
C216-1	VGFS-5050	Kit-1	1.125	BCF-F
C216-1E	VGFS-5051	Kit-1	1.125	QCF-F
C216-1V	VGFS-5052	Kit-1	1.125	VCF-F
C216-3	VGFS-5053	Kit-2	1.125	BCF-F
C216-3E	VGFS-5054	Kit-2	1.125	QCF-F

Mfg. Part No.	Value Guard Part No.	Seal Type	Shaft Dia.	Material Code
C216-3V	VGFS-5055	Kit-2	1.125	VCF-F
9613990016	VGFS-5056	Kit-3	1.125	BCF-F
9613990017	VGFS-5057	Kit-3	1.125	QCF-F
9613990018	VGFS-5058	Kit-3	1.125	VCF-F

VGFS-5053
Kit-2



VGFS-5043
Back Plate



C218 / C328 SP218 / SP328

Mfg. Part No.	Value Guard Part No.	Component	Material Code
328D-11-316	VGFS-5060	Back Plate	SS (F)
328D-80-3P	VGFS-5061	Cup	SS (F)
328D-80-4	VGFS-5062	Spring	SS (F)
328E-80-1A	VGFS-5063	Rotary Face	Carbon (C)
S328-80-2-E	VGFS-5064	O-Ring, Rotary	EPR (Q)

Mfg. Part No.	Value Guard Part No.	Component	Material Code
S328-80-2-SFY	VGFS-5065	O-Ring, Rotary	Viton® (V)
S328-80-2-U	VGFS-5066	O-Ring, Rotary	Buna (B)
S328-90A-U	VGFS-5067	Casing Gasket	Buna (B)
SC1105A-SS	VGFS-5068	Set Screw	SS (F)
SP328D-23P-S	VGFS-5069	Drive Collar	SS (F)

Pump Service Kits

Mfg. Part No.	Value Guard Part No.	Kit Type	Shaft Dia.	Material Code
C328-1	VGFS-5070	Kit-1	1.500	BCF-F
C328-1E	VGFS-5071	Kit-1	1.500	QCF-F
C328-1V	VGFS-5072	Kit-1	1.500	VCF-F
C328-3	VGFS-5073	Kit-2	1.500	BCF-F
C328-3E	VGFS-5074	Kit-2	1.500	QCF-F

Mfg. Part No.	Value Guard Part No.	Kit Type	Shaft Dia.	Material Code
C328-3V	VGFS-5075	Kit-2	1.500	VCF-F
9613990019	VGFS-5076	Kit-3	1.500	BCF-F
9613990020	VGFS-5077	Kit-3	1.500	QCF-F
9613990021	VGFS-5078	Kit-3	1.500	VCF-F

Pump Service Kit-1 includes rotary face, rotary o-ring, case gasket and impeller pin.
 Pump Service Kit-2 includes rotary face, rotary o-ring, spring and cup.
 Pump Service Kit-3 includes rotary face, rotary o-ring, spring, cup, case gasket and set screws.

Waukesha® Cherry-Burrell® PD Pump Replacement Seals

U1 006, 015, 018, 024 Seal & O-Ring Kits

Mfg. Part No.	Value Guard Part No.	Seal Type	Shaft Dia.	Material Code	Mfg. Part No.	Value Guard Part No.	Seal Type	Shaft Dia.	Material Code
105295	VGFS-6000	Single	1.250	BJ-CF	105299	VGFS-6010	Double	1.250	BJ-CF
105296	VGFS-6001	Single	1.250	VJ-CF	105300	VGFS-6011	Double	1.250	VJ-CF
105297	VGFS-6002	Single	1.250	BL-CF	105301	VGFS-6012	Double	1.250	BL-C/LF
105298	VGFS-6003	Single	1.250	VL-CF	105302	VGFS-6013	Double	1.250	VL-C/LF
—	VGFS-6004	Single	1.250	BL-LF	—	VGFS-6014	Double	1.250	QJ-CF
—	VGFS-6005	Single	1.250	QJ-CF	—	VGFS-6015	Double	1.250	QL-C/LF
—	VGFS-6006	Single	1.250	QL-CF					
—	VGFS-6007	Single	1.250	QL-LF					
—	VGFS-6008	Single	1.250	VL-LF					

Includes Seals, O-Rings and Wave Springs for 2 shafts



VGFS-6008

U1- Single Seal & O-Ring Kit
2 Required per Pump



VGFS-6015

U1- Double Seal & O-Ring Kit
2 Required per Pump

Waukesha® Cherry-Burrell® PD Pump Replacement Seals

U1 006, 015, 018, 024 Sleeve & O-Ring Kits

Mfg. Part No.	Value Guard Part No.	Sleeve Type	Shaft Dia.	Material Code	Mfg. Part No.	Value Guard Part No.	Sleeve Type	Shaft Dia.	Material Code
105247	VGFS-6020	Single	1.250	B--F-	105249	VGFS-6023	Double	1.250	B--F-
105251	VGFS-6021	Single	1.250	V--F-	105253	VGFS-6024	Double	1.250	V--F-
—	VGFS-6022	Single	1.250	Q--F-	—	VGFS-6025	Double	1.250	Q--F-

Includes Sleeves and O-rings for 2 shafts



VGFS-6022

Seal & Seat Components

Inner Seal				Outer Seal			
Mfg. Part No.	Value Guard Part No.	Component	Material Code	Mfg. Part No.	Value Guard Part No.	Component	Material Code
015-306-002	VGFS-6030	Seal, Stationary Face	Ceramic (J)	015-206-007	VGFS-6037	Seal, Stationary Face	Carbon (C)
015-306-007	VGFS-6031	Seal, Stationary Face	Carbon (C)	N50228	VGFS-6038	O-Ring, Stationary Face	Buna (B)
015-306-009	VGFS-6032	Seal, Stationary Face	SC (L)				
AD0079000	VGFS-6033	O-Ring, Stationary Face	Buna (B)				
AD0079002	VGFS-6034	O-Ring, Stationary Face	EPR (Q)				
AD0079SC0	VGFS-6035	O-Ring, Stationary Face	Silicone (I)				
AD0079V00	VGFS-6036	O-Ring, Stationary Face	Viton® (V)				

Components for Inner and Outer Seals

Mfg. Part No.	Value Guard Part No.	Component	Material Code	Mfg. Part No.	Value Guard Part No.	Component	Material Code
E70022	VGFS-6040	O-Ring, Shaft	EPR (Q)	015-014-009	VGFS-6045	Seal, Rotary Face	SC (L)
N70022	VGFS-6041	O-Ring, Shaft	Buna (B)	015-098-000	VGFS-6046	Sleeve	SS (F)
S70022	VGFS-6042	O-Ring, Shaft	Silicone (I)	015-098-002	VGFS-6047	Sleeve	** (W)
V70022	VGFS-6043	O-Ring, Shaft	Viton® (V)	015-098-004	VGFS-6048	Sleeve	Zirconia
015-014-002	VGFS-6044	Seal, Rotary Face	Ceramic (J)	015-304-000	VGFS-6049	Spring, Wave	SS (F)

**Chrome Oxide Coated SS

Waukesha® Cherry-Burrell® PD Pump Replacement Seals

U1 030, 034 Seal & O-Ring Kits

Mfg. Part No.	Value Guard Part No.	Seal Type	Shaft Dia.	Material Code
105305	VGFS-6100	Single	1.500	BJ-CF
105306	VGFS-6101	Single	1.500	VJ-CF
105307	VGFS-6102	Single	1.500	BL-CF
105308	VGFS-6103	Single	1.500	VL-CF
—	VGFS-6104	Single	1.500	BL-LF
—	VGFS-6105	Single	1.500	QJ-CF
—	VGFS-6106	Single	1.500	QL-CF
—	VGFS-6107	Single	1.500	QL-LF
—	VGFS-6108	Single	1.500	VL-LF

Includes Seals, O-Rings and Wave Springs for 2 shafts

Sleeve & O-Ring Kits

Mfg. Part No.	Value Guard Part No.	Sleeve Type	Shaft Dia.	Material Code
105259	VGFS-6120	Single	1.500	B--F-
—	VGFS-6121	Single	1.500	Q--F-
105263	VGFS-6122	Single	1.500	V--F-

Includes Sleeves and O-Rings for 2 shafts

Seal & Seat Components

Inner Seal				Outer Seal			
Mfg. Part No.	Value Guard Part No.	Component	Material Code	Mfg. Part No.	Value Guard Part No.	Component	Material Code
030-306-002	VGFS-6130	Seal, Stationary Face	Ceramic (J)	030-206-007	VGFS-6137	Seal, Stationary Face	Carbon (C)
030-306-007	VGFS-6131	Seal, Stationary Face	Carbon (C)	N50335	VGFS-6138	O-Ring, Stationary Face	Buna (B)
030-306-009	VGFS-6132	Seal, Stationary Face	SC (L)				
AD0079000	VGFS-6133	O-Ring, Stationary Face	Buna (B)				
AD0079002	VGFS-6134	O-Ring, Stationary Face	EPR (Q)				
AD0079SC0	VGFS-6135	O-Ring, Stationary Face	Silicone (I)				
AD0079V00	VGFS-6136	O-Ring, Stationary Face	Viton® (V)				

Components for Inner and Outer Seals

Mfg. Part No.	Value Guard Part No.	Component	Material Code
E70028	VGFS-6140	O-Ring, Shaft	EPR (Q)
N70028	VGFS-6141	O-Ring, Shaft	Buna (B)
S70028	VGFS-6142	O-Ring, Shaft	Silicone (I)
V70028	VGFS-6143	O-Ring, Shaft	Viton® (V)
030-014-002	VGFS-6144	Seal, Rotary Face	Ceramic (J)

**Chrome Oxide Coated SS

Contact U.S. Seal Mfg. for Equipment Manufacturers, Part Numbers or Materials Not Listed.
See Contents Page for information on Material Code.

Waukesha® Cherry-Burrell® PD Pump Replacement Seals

U1 040, 060, 064, 130, 134 Seal & O-Ring Kits

Mfg. Part No.	Value Guard Part No.	Seal Type	Shaft Dia.	Material Code
105315	VGFS-6200	Single	1.875	BJ-CF
105316	VGFS-6201	Single	1.875	VJ-CF
105317	VGFS-6202	Single	1.875	BL-CF
105318	VGFS-6203	Single	1.875	VL-CF
—	VGFS-6204	Single	1.875	BL-LF
—	VGFS-6205	Single	1.875	QJ-CF
—	VGFS-6206	Single	1.875	QL-CF
—	VGFS-6207	Single	1.875	QL-LF
—	VGFS-6208	Single	1.875	VL-LF

Includes Seals, O-Rings and Wave Springs for 2 shafts

Sleeve & O-Ring Kits

Mfg. Part No.	Value Guard Part No.	Sleeve Type	Shaft Dia.	Material Code
105271	VGFS-6220	Single	1.875	B--F-
—	VGFS-6221	Single	1.875	Q--F-
105275	VGFS-6222	Single	1.875	V--F-

Includes Sleeves and O-Rings for 2 shafts

Seal & Seat Components

Inner Seal				Outer Seal			
Mfg. Part No.	Value Guard Part No.	Component	Material Code	Mfg. Part No.	Value Guard Part No.	Component	Material Code
060-306-002	VGFS-6230	Seal, Stationary Face	Ceramic (J)	060-206-007	VGFS-6237	Seal, Stationary Face	Carbon (C)
060-306-007	VGFS-6231	Seal, Stationary Face	Carbon (C)	N50338	VGFS-6238	O-Ring, Stationary Face	Buna (B)
060-306-009	VGFS-6232	Seal, Stationary Face	SC (L)				
E70331	VGFS-6233	O-Ring, Stationary Face	EPR (Q)				
N70331	VGFS-6234	O-Ring, Stationary Face	Buna (B)				
S70331	VGFS-6235	O-Ring, Stationary Face	Silicone (I)				
V70331	VGFS-6236	O-Ring, Stationary Face	Viton® (V)				

Components for Inner and Outer Seals

Mfg. Part No.	Value Guard Part No.	Component	Material Code
E70131	VGFS-6240	O-Ring, Shaft	EPR (Q)
N70131	VGFS-6241	O-Ring, Shaft	Buna (B)
S70131	VGFS-6242	O-Ring, Shaft	Silicone (I)
V70131	VGFS-6243	O-Ring, Shaft	Viton® (V)
060-014-002	VGFS-6244	Seal, Rotary Face	Ceramic (J)

**Chrome Oxide Coated SS

Contact U.S. Seal Mfg. for Equipment Manufacturers, Part Numbers or Materials Not Listed.
See Contents Page for information on Material Code.

Waukesha® Cherry-Burrell® PD Pump Replacement Seals

U1 220, 224 Seal & O-Ring Kits

Mfg. Part No.	Value Guard Part No.	Seal Type	Shaft Dia.	Material Code	Mfg. Part No.	Value Guard Part No.	Seal Type	Shaft Dia.	Material Code
105325	VGFS-6300	Single	2.750	BJ-CF	105329	VGFS-6309	Double	2.750	BJ-CF
105326	VGFS-6301	Single	2.750	VJ-CF	105330	VGFS-6310	Double	2.750	VJ-CF
105327	VGFS-6302	Single	2.750	BL-CF	105331	VGFS-6311	Double	2.750	BL-C/LF
105328	VGFS-6303	Single	2.750	VL-CF	105332	VGFS-6312	Double	2.750	VL-C/LF
—	VGFS-6304	Single	2.750	BL-LF	—	VGFS-6313	Double	2.750	QJ-CF
—	VGFS-6305	Single	2.750	QJ-CF	—	VGFS-6314	Double	2.750	QL-C/LF
—	VGFS-6306	Single	2.750	QL-CF					
—	VGFS-6307	Single	2.750	QL-LF					
—	VGFS-6308	Single	2.750	VL-LF					

Includes Seals, O-Rings and Wave Springs for 2 shafts

Sleeve & O-Ring Kits

Mfg. Part No.	Value Guard Part No.	Sleeve Type	Shaft Dia.	Material Code	Mfg. Part No.	Value Guard Part No.	Sleeve Type	Shaft Dia.	Material Code
105283	VGFS-6320	Single	2.750	B--F-	105285	VGFS-6323	Double	2.750	B--F-
—	VGFS-6321	Single	2.750	Q--F-	—	VGFS-6324	Double	2.750	Q--F-
105287	VGFS-6322	Single	2.750	V--F-	105289	VGFS-6325	Double	2.750	V--F-

Includes Sleeves and O-Rings for 2 shafts

Seal & Seat Components

Inner Seal				Outer Seal			
Mfg. Part No.	Value Guard Part No.	Component	Material Code	Mfg. Part No.	Value Guard Part No.	Component	Material Code
220-306-002	VGFS-6330	Seal, Stationary Face	Ceramic (J)	220-206-007	VGFS-6340	Seal, Stationary Face	Carbon (C)
220-306-007	VGFS-6331	Seal, Stationary Face	Carbon (C)	N50344	VGFS-6341	O-Ring, Stationary Face	Buna (B)
220-306-009	VGFS-6332	Seal, Stationary Face	SC (L)				
E70338	VGFS-6333	O-Ring, Stationary Face	EPR (Q)				
N70338	VGFS-6334	O-Ring, Stationary Face	Buna (B)				
S70338	VGFS-6335	O-Ring, Stationary Face	Silicone (I)				
V70338	VGFS-6336	O-Ring, Stationary Face	Viton® (V)				

Components for Inner and Outer Seals

Mfg. Part No.	Value Guard Part No.	Component	Material Code	Mfg. Part No.	Value Guard Part No.	Component	Material Code
E70144	VGFS-6350	O-Ring, Shaft	EPR (Q)	220-014-009	VGFS-6355	Seal Seat, Rotary Face	SC (L)
N70144	VGFS-6351	O-Ring, Shaft	Buna (B)	220-098-000	VGFS-6356	Sleeve	SS (F)
S70144	VGFS-6352	O-Ring, Shaft	Silicone (I)	220-098-002	VGFS-6357	Sleeve	** (W)
V70144	VGFS-6353	O-Ring, Shaft	Viton® (V)	220-098-004	VGFS-6358	Sleeve	Zirconia
220-014-002	VGFS-6354	Seal Seat, Rotary Face	Ceramic (J)	220-304-000	VGFS-6359	Spring, Wave	SS (F)

**Chrome Oxide Coated SS

Contact U.S. Seal Mfg. for Equipment Manufacturers, Part Numbers or Materials Not Listed.
See Contents Page for information on Material Code.

Waukesha® Cherry-Burrell® PD Pump Replacement Seals

U1 320, 323, 324

Per Shaft					Per Pump				
Mfg. Part No.	Value Guard Part No.	Seal Type	Shaft Dia.	Material Code	Mfg. Part No.	Value Guard Part No.	Seal Type	Shaft Dia.	Material Code
—	VGFS-6400	Double	3.000	QC/L-LF	—	VGFS-6403	Double	3.000	QC/L-LF
—	VGFS-6401	Double	3.000	IC/L-LF	—	VGFS-6404	Double	3.000	IC/L-LF
—	VGFS-6402	Double	3.000	VC/L-LF	—	VGFS-6405	Double	3.000	VC/L-LF

Includes Double Seal for 1 Shaft

Includes Double Seals for 2 Shafts

Inner Seal Components

Mfg. Part No.	Value Guard Part No.	Component	Material Code
36027	VGFS-6410	Face, Rotary	Carbon (C)
40754	VGFS-6411	Face, Rotary	SC (L)
40755	VGFS-6412	Face, Rotary	Ceramic (J)
300042001	VGFS-6413	Gasket, Full Clamp Seat	EPR (Q)
—	VGFS-6414	Gasket, Full Clamp Seat	Silicone (I)
E70238	VGFS-6415	O-Ring, Rotary Face	EPR (Q)
S75238	VGFS-6416	O-Ring, Rotary Face	Silicone (I)
V70238	VGFS-6417	O-Ring, Rotary Face	Viton® (V)
E70234	VGFS-6418	O-Ring, Shaft	EPR (Q)
S75234	VGFS-6419	O-Ring, Shaft	Silicone (I)
V70234	VGFS-6420	O-Ring, Shaft	Viton® (V)
—	VGFS-6421	Rotary, Complete	QCF-F
40572	VGFS-6422	Rotary, Complete	QLF-F
—	VGFS-6423	Rotary, Complete	ICF-F
—	VGFS-6424	Rotary, Complete	ILF-F
—	VGFS-6425	Rotary, Complete	VCF-F
—	VGFS-6426	Rotary, Complete	VLF-F
110038	VGFS-6427	Set Screw	SS (F)
40875	VGFS-6428	Spring	SS (F)

Outer Seal Components

Mfg. Part No.	Value Guard Part No.	Component	Material Code
300042002	VGFS-6430	Gasket, Full Clamp Seat	EPR (Q)
—	VGFS-6431	Gasket, Full Clamp Seat	Silicone (I)
323114003	VGFS-6432	Rotary, Complete	QCF-F
—	VGFS-6433	Face, Rotary	Carbon (C)
—	VGFS-6434	Face, Rotary	SC (L)
—	VGFS-6435	Spring	SS (F)

Seat Components

Mfg. Part No.	Value Guard Part No.	Component	Material Code	Mfg. Part No.	Value Guard Part No.	Component	Material Code
300014027	VGFS-6440	Seat, Full Clamp Flush	Ceramic (J)	300014012	VGFS-6442	Seat, Full Clamp, Non-Flush	Ceramic (J)
300042031	VGFS-6441	Seat, Full Clamp Flush	SC (L)	300042016	VGFS-6443	Seat, Full Clamp Non-Flush	SC (L)

Contact U.S. Seal Mfg. for Equipment Manufacturers, Part Numbers or Materials Not Listed.
See Contents Page for information on Material Code.

Waukesha® Cherry-Burrell® PD Pump Replacement Seals

U2 006, 015, 018

Mfg. Part No.	Value Guard Part No.	Seal Type	Shaft Dia.	Material Code
—	VGFS-6500	Single	1.250	QL-CF
—	VGFS-6501	Single	1.250	QL-LF
—	VGFS-6502	Single	1.250	VL-CF
—	VGFS-6503	Single	1.250	VL-LF

Mfg. Part No.	Value Guard Part No.	Seal Type	Shaft Dia.	Material Code
—	VGFS-6504	Double	1.250	QC/J-JF
—	VGFS-6505	Double	1.250	QC/L-LF
—	VGFS-6506	Double	1.250	QJ-CF
—	VGFS-6507	Double	1.250	QL-LF
—	VGFS-6508	Double	1.250	VC/J-JF
—	VGFS-6509	Double	1.250	VC/L-LF
—	VGFS-6510	Double	1.250	VJ-CF
—	VGFS-6511	Double	1.250	VL-LF

Includes Seals, O-rings and Wave Springs for 1 shaft (2 required per pump)



VGFS-6501



VGFS-6505

Inner Seal Components			
Mfg. Part No.	Value Guard Part No.	Component	Material Code
101651	VGFS-6520	Seal, Stationary Face	Carbon (C)
101652	VGFS-6521	Seal, Stationary Face	Ceramic (J)
101653	VGFS-6522	Seal, Stationary Face	SC (L)
101683	VGFS-6523	Spring, Wave	SS (F)
E70028	VGFS-6524	O-Ring, Stationary Face	EPR (Q)
N70028	VGFS-6525	O-Ring, Stationary Face	Buna (B)
V70028	VGFS-6526	O-Ring, Stationary Face	Viton® (V)

Outer Seal Components			
Mfg. Part No.	Value Guard Part No.	Component	Material Code
101679	VGFS-6530	Seal, Stationary Face	Carbon (C)
101684	VGFS-6531	Spring, Wave	SS (F)
E70035	VGFS-6532	O-Ring, Stationary Face	EPR (Q)
N70035	VGFS-6533	O-Ring, Stationary Face	Buna (B)
V70035	VGFS-6534	O-Ring, Stationary Face	Viton® (V)

Seat Components

Mfg. Part No.	Value Guard Part No.	Component	Material Code
E70024	VGFS-6540	O-Ring, Rotary Face	EPR (Q)
N70024	VGFS-6541	O-Ring, Rotary Face	Buna (B)
V70024	VGFS-6542	O-Ring, Rotary Face	Viton® (V)

Mfg. Part No.	Value Guard Part No.	Component	Material Code
101667	VGFS-6543	Seal, Rotary Face	Ceramic (J)
101668	VGFS-6544	Seal, Rotary Face	SC (L)

Waukesha® Cherry-Burrell® PD Pump Replacement Seals

U2 030, 034

Mfg. Part No.	Value Guard Part No.	Seal Type	Shaft Dia.	Material Code
—	VGFS-6600	Single	1.500	QL-CF
—	VGFS-6601	Single	1.500	QL-LF
—	VGFS-6602	Single	1.500	VL-CF
—	VGFS-6603	Single	1.500	VL-LF

Mfg. Part No.	Value Guard Part No.	Seal Type	Shaft Dia.	Material Code
—	VGFS-6604	Double	1.500	QC/J-JF
—	VGFS-6605	Double	1.500	QC/L-LF
—	VGFS-6606	Double	1.500	QJ-CF
—	VGFS-6607	Double	1.500	QL-LF
—	VGFS-6608	Double	1.500	VC/J-JF
—	VGFS-6609	Double	1.500	VC/L-LF
—	VGFS-6610	Double	1.500	VJ-CF
—	VGFS-6611	Double	1.500	VL-LF

Includes Seals, O-rings and Wave Springs for 1 shaft (2 required per pump)

Inner Seal Components			
Mfg. Part No.	Value Guard Part No.	Component	Material Code
101655	VGFS-6620	Seal, Stationary Face	Carbon (C)
101656	VGFS-6621	Seal, Stationary Face	Ceramic (J)
101657	VGFS-6622	Seal, Stationary Face	SC (L)
101685	VGFS-6623	Spring, Wave	SS (F)
E70031	VGFS-6624	O-Ring, Stationary Face	EPR (Q)
N70031	VGFS-6625	O-Ring, Stationary Face	Buna (B)
V70031	VGFS-6626	O-Ring, Stationary Face	Viton® (V)

Outer Seal Components			
Mfg. Part No.	Value Guard Part No.	Component	Material Code
101680	VGFS-6630	Seal, Stationary Face	Carbon (C)
101686	VGFS-6631	Spring, Wave	SS (F)
E70041	VGFS-6632	O-Ring, Stationary Face	EPR (Q)
N70041	VGFS-6633	O-Ring, Stationary Face	Buna (B)
V70041	VGFS-6634	O-Ring, Stationary Face	Viton® (V)

Seat Components			
Mfg. Part No.	Value Guard Part No.	Component	Material Code
E70029	VGFS-6640	O-Ring, Rotary Face	EPR (Q)
N70029	VGFS-6641	O-Ring, Rotary Face	Buna (B)
V70029	VGFS-6642	O-Ring, Rotary Face	Viton® (V)

Mfg. Part No.	Value Guard Part No.	Component	Material Code
101670	VGFS-6643	Seal, Rotary Face	Ceramic (J)
101671	VGFS-6644	Seal, Rotary Face	SC (L)

Waukesha® Cherry-Burrell® PD Pump Replacement Seals

U2 040, 045, 060, 064, 130, 134

Mfg. Part No.	Value Guard Part No.	Seal Type	Shaft Dia.	Material Code
—	VGFS-6700	Single	1.875	QL-CF
—	VGFS-6701	Single	1.875	QL-LF
—	VGFS-6702	Single	1.875	VL-CF
—	VGFS-6703	Single	1.875	VL-LF

Mfg. Part No.	Value Guard Part No.	Seal Type	Shaft Dia.	Material Code
—	VGFS-6704	Double	1.875	QC/J-JF
—	VGFS-6705	Double	1.875	QC/L-LF
—	VGFS-6706	Double	1.875	QJ-CF
—	VGFS-6707	Double	1.875	QL-LF
—	VGFS-6708	Double	1.875	VC/J-JF
—	VGFS-6709	Double	1.875	VC/L-LF
—	VGFS-6710	Double	1.875	VJ-CF
—	VGFS-6711	Double	1.875	VL-LF

Includes Seals, O-rings and Wave Springs for 1 shaft (2 required per pump)

Waukesha® Cherry-Burrell® PD Pump Replacement Seals

U2 180, 220, 224

Mfg. Part No.	Value Guard Part No.	Seal Type	Shaft Dia.	Material Code
—	VGFS-6800	Single	2.750	QL-CF
—	VGFS-6801	Single	2.750	QL-LF
—	VGFS-6802	Single	2.750	VL-CF
—	VGFS-6803	Single	2.750	VL-LF

Mfg. Part No.	Value Guard Part No.	Seal Type	Shaft Dia.	Material Code
—	VGFS-6804	Double	2.750	QC/J-JF
—	VGFS-6805	Double	2.750	QC/L-LF
—	VGFS-6806	Double	2.750	QJ-CF
—	VGFS-6807	Double	2.750	QL-LF
—	VGFS-6808	Double	2.750	VC/J-JF
—	VGFS-6809	Double	2.750	VC/L-LF
—	VGFS-6810	Double	2.750	VJ-CF
—	VGFS-6811	Double	2.750	VL-LF

Includes Seals, O-rings and Wave Springs for 1 shaft (2 required per pump)

Inner Seal Components

Mfg. Part No.	Value Guard Part No.	Component	Material Code
101659	VGFS-6720	Seal, Stationary Face	Carbon (C)
101660	VGFS-6721	Seal, Stationary Face	Ceramic (J)
101661	VGFS-6722	Seal, Stationary Face	SC (L)
101687	VGFS-6723	Spring, Wave	SS (F)
E70035	VGFS-6724	O-Ring, Stationary Face	EPR (Q)
N70035	VGFS-6725	O-Ring, Stationary Face	Buna (B)
V70035	VGFS-6726	O-Ring, Stationary Face	Viton® (V)

Outer Seal Components

Mfg. Part No.	Value Guard Part No.	Component	Material Code
101681	VGFS-6730	Seal, Stationary Face	Carbon (C)
101688	VGFS-6731	Spring, Wave	SS (F)
E70043	VGFS-6732	O-Ring, Stationary Face	EPR (Q)
N70043	VGFS-6733	O-Ring, Stationary Face	Buna (B)
V70043	VGFS-6734	O-Ring, Stationary Face	Viton® (V)

Inner Seal Components

Mfg. Part No.	Value Guard Part No.	Component	Material Code
101663	VGFS-6820	Seal, Stationary Face	Carbon (C)
101664	VGFS-6821	Seal, Stationary Face	Ceramic (J)
101665	VGFS-6822	Seal, Stationary Face	SC (L)
101689	VGFS-6823	Spring, Wave	SS (F)
E70041	VGFS-6824	O-Ring, Stationary Face	EPR (Q)
N70041	VGFS-6825	O-Ring, Stationary Face	Buna (B)
V70041	VGFS-6826	O-Ring, Stationary Face	Viton® (V)

Outer Seal Components

Mfg. Part No.	Value Guard Part No.	Component	Material Code
101682	VGFS-6830	Seal, Stationary Face	Carbon (C)
101690	VGFS-6831	Spring, Wave	SS (F)
E70046	VGFS-6832	O-Ring, Stationary Face	EPR (Q)
N70046	VGFS-6833	O-Ring, Stationary Face	Buna (B)
V70046	VGFS-6834	O-Ring, Stationary Face	Viton® (V)

Seat Components

Mfg. Part No.	Value Guard Part No.	Component	Material Code
E70133	VGFS-6740	O-Ring, Rotary Face	EPR (Q)
N70133	VGFS-6741	O-Ring, Rotary Face	Buna (B)
V70133	VGFS-6742	O-Ring, Rotary Face	Viton® (V)

Mfg. Part No.	Value Guard Part No.	Component	Material Code
101673	VGFS-6743	Seal, Rotary Face	Ceramic (J)
101674	VGFS-6744	Seal, Rotary Face	SC (L)

Seat Components

Mfg. Part No.	Value Guard Part No.	Component	Material Code
E70145	VGFS-6840	O-Ring, Rotary Face	EPR (Q)
N70145	VGFS-6841	O-Ring, Rotary Face	Buna (B)
V70145	VGFS-6842	O-Ring, Rotary Face	Viton® (V)

Mfg. Part No.	Value Guard Part No.	Component	Material Code
101676	VGFS-6843	Seal, Rotary Face	Ceramic (J)
101677	VGFS-6844	Seal, Rotary Face	SC (L)

Waukesha® Cherry-Burrell® PD Pump Replacement Seals

U2 210, 320, 324

Mfg. Part No.	Value Guard Part No.	Seal Type	Shaft Dia.	Material Code
—	VGFS-6900	Single	3.000	QL-CF
—	VGFS-6901	Single	3.000	QL-LF
—	VGFS-6902	Single	3.000	VL-CF
—	VGFS-6903	Single	3.000	VL-LF

Mfg. Part No.	Value Guard Part No.	Seal Type	Shaft Dia.	Material Code
—	VGFS-6904	Double	3.000	QC/J-JF
—	VGFS-6905	Double	3.000	QC/L-LF
—	VGFS-6906	Double	3.000	QJ-CF
—	VGFS-6907	Double	3.000	QL-LF
—	VGFS-6908	Double	3.000	VC/J-JF
—	VGFS-6909	Double	3.000	VC/L-LF
—	VGFS-6910	Double	3.000	VJ-CF
—	VGFS-6911	Double	3.000	VL-LF

Includes Seals, O-rings and Wave Springs for 1 shaft (2 required per pump)

Inner Seal Components

Mfg. Part No.	Value Guard Part No.	Component	Material Code
105412	VGFS-6920	Seal, Stationary Face	Carbon (C)
105413	VGFS-6921	Seal, Stationary Face	Ceramic (J)
105414	VGFS-6922	Seal, Stationary Face	SC (L)
105419	VGFS-6923	Spring, Wave	SS (F)
E70154	VGFS-6924	O-Ring, Stationary Face	EPR (Q)
N70154	VGFS-6925	O-Ring, Stationary Face	Buna (B)
V70154	VGFS-6926	O-Ring, Stationary Face	Viton® (V)

Outer Seal Components

Mfg. Part No.	Value Guard Part No.	Component	Material Code
105418	VGFS-6930	Seal, Stationary Face	Carbon (C)
105420	VGFS-6931	Spring, Wave	SS (F)
E70160	VGFS-6932	O-Ring, Stationary Face	EPR (Q)
N70160	VGFS-6933	O-Ring, Stationary Face	Buna (B)
V70160	VGFS-6934	O-Ring, Stationary Face	Viton® (V)

Seat Components

Mfg. Part No.	Value Guard Part No.	Component	Material Code
E70149	VGFS-6940	O-Ring, Rotary Face	EPR (Q)
N70149	VGFS-6941	O-Ring, Rotary Face	Buna (B)
V70149	VGFS-6942	O-Ring, Rotary Face	Viton® (V)

Mfg. Part No.	Value Guard Part No.	Component	Material Code
105416	VGFS-6943	Seal, Rotary Face	Ceramic (J)
105417	VGFS-6944	Seal, Rotary Face	SC (L)

Waukesha® Cherry-Burrell® PD Pump Replacement Seals

200 Series

200 Series Seal Kits

Mfg. Part No.	Value Guard Part No.	Seal Type	Shaft Dia.	Material Code
—	VGFS-7000	Single	1.750	VC-L-
—	VGFS-7001	Single	1.750	VL-Z-

Kits include rotary face, O-rings, and oversized cup seat.



VGFS-7021

200 Series Components

Mfg. Part No.	Value Guard Part No.	Component	Material Code
9-37	VGFS-7002	Cup, oversized	Viton® (V)
9-225A	VGFS-7003	Rotary Face	Carbon (C)
9-225C	VGFS-7004	Rotary Face	SC (L)
9-225F	VGFS-7005	Rotary Face	TC (Z)
23-17	VGFS-7006	Seat, oversized	SC (L)
23-17V	VGFS-7007	Seat, oversized cup	V - - L -
23-77	VGFS-7008	Spring Retainer	SS (F)
23-79	VGFS-7009	Retainer, Seal	SS (F)
24-65	VGFS-7010	Spring, Coil	SS (F)
24-65Z	VGFS-7011	Spring, Wave	SS (F)
43-87	VGFS-7012	Washer, Tabbed	SS (F)

Type 1 Seal Kits Shaft Diameter 1.500

Type 4 Seal Kits Shaft Diameter 1.750

Model 2045

Mfg. Part No.	Value Guard Part No.	Seal Type	Kit Type	Material Code
309-241	VGFS-7020	Single	1 Basic	VC---
309-245	VGFS-7021	Single	1 Complete	VC-L-

Mfg. Part No.	Value Guard Part No.	Seal Type	Kit Type	Material Code
309-249	VGFS-7022	Double	4 Basic	VC---
309-253	VGFS-7023	Double	4 Complete	VC-L-

Models 2065 / 2065HV / 2065LV

309-242	VGFS-7030	Single	1 Basic	VC---
309-246	VGFS-7031	Single	1 Complete	VC-L-

309-250	VGFS-7032	Double	4 Basic	VC---
309-254	VGFS-7033	Double	4 Complete	VC-L-

Model 2075 / 2085 / 2085LV

309-243	VGFS-7040	Single	1 Basic	VC---
309-247	VGFS-7041	Single	1 Complete	VC-L-

309-251	VGFS-7042	Double	4 Basic	VC---
309-255	VGFS-7043	Double	4 Complete	VC-L-

Model 2105

309-244	VGFS-7050	Single	1 Basic	VC---
309-248	VGFS-7051	Single	1 Complete	VC-L-

309-252	VGFS-7052	Double	4 Basic	VC---
309-256	VGFS-7053	Double	4 Complete	VC-L-

Type 1 Basic Kit includes casing o-ring, impeller o-ring, rotary face and rotary o-ring.

Type 4 Basic Kit includes casing o-ring, impeller o-ring, rotary faces, rotary o-rings and seal housing o-rings.

Type 1 Complete Kit includes casing o-ring, impeller o-ring, L-gasket, rotary face and rotary o-ring.

Type 4 Complete Kit includes casing o-ring, impeller o-ring, L-gaskets, rotary faces, seal housing o-rings, stationary faces and stationary o-rings.

Distributed By:

DEMAND QUALITY...

DEMAND U.S. SEAL MFG.



155 Pierce Street, Somerset, NJ 08873
Tel 800-243-5489 Fax 877-849-7325
www.ussealmfg.com



APV® and Waukesha® Cherry-Burrell® are registered trademarks of the SPX Corporation
Alfa Laval® and Tri-Clover® are registered trademarks of Alfa Laval Corporate AB
Fristam Pumps® is a registered trademark of Fristam Pumpen KG

APV®, Alfa Laval®, Fristam Pumps®, Tri-Clover® and Waukesha® Cherry-Burrell® are not affiliated with U.S. Seal Mfg.
Products supplied are manufactured or purchased by U.S. Seal Mfg. from sources other than the companies listed.